

19.9m Fast Ferry

Formerly MCA Category D, 41 x Passenger &
MECAL MCA Category 2, 12 x Passenger

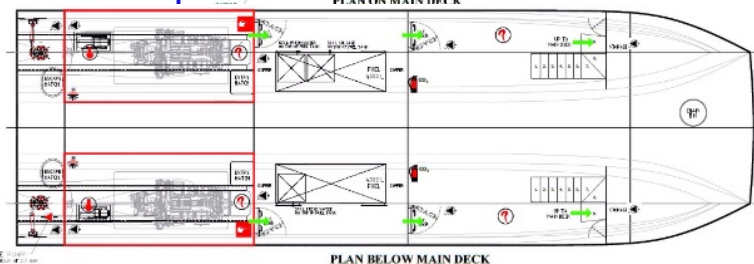
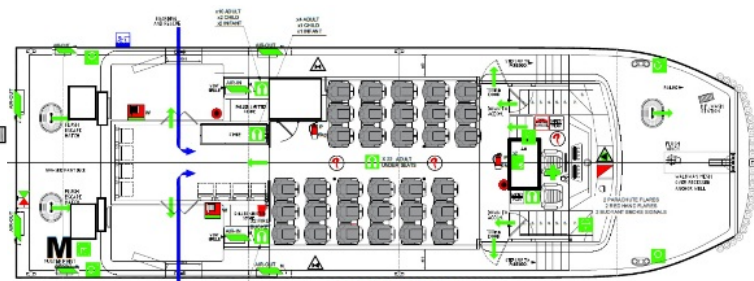
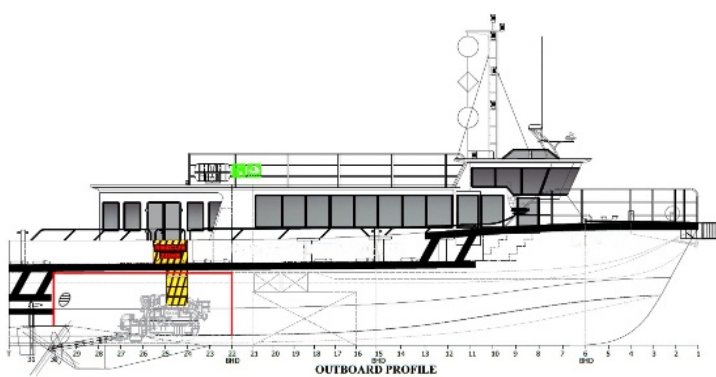


General Characteristics

Structure	Aluminium (DNV Plan Approved)
S/Structure Mounting	Welded
Classification	TBC
Flag	UK, MCA

Dimensions

Length O.A	19.90m
Beam O.A	6.40m
Depth	2.40m
Draft (Max)	1.55m (including Skeg)
Displacement (lightship)	41 tonnes



Capacities

Fuel oil	8,500L
Fresh water	1,000L
Black water	500L
Crew	<3 persons
Passengers	<41 persons (Category D)

Performance

Speed (continuous)	19.9 knots (300 litres/hr)
--------------------	----------------------------

Propulsion system

Main Engines	2 x Caterpillar C32
Total power	2 x 670hp (nominal)
Gearbox	2 x Twin Disc MGX6620A
Propulsion	Fixed Pitch Propulsion

Electrical equipment

Network	24V DC, 230V 50 Hz AC
Generator set	1 x 17.5kW, 1 x 6.5 kW

Deck layout

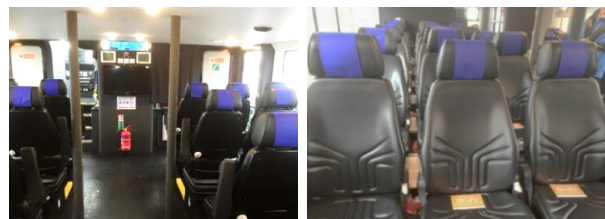
Anchor equipment	Hydraulic Winch and Anchor
Mob delivery system	Ship Mounted Davit and Recovery System

Life saving equipment

Life buoys	4
Life jackets	To suit certification
Life rafts	To suit certification
Fire fighting	FM200 Fi-Fi system in engine rooms, portable hand operated Fi-Fi in other areas

Accommodation

Accommodation	41 x Saloon seats, 2 x Crew Cabins, 1 x Heads, 2 x Bridge Seats, 2 x Wheelchair Mount Points
Noise levels	<70dBa



All published information is for guidance only, is not guaranteed and is subject to change. Vessel branding is based nominally on hull length and is indicative only.

Copyright © and design rights exist in this work. No part of this work may be reproduced in any form or by means without the prior written consent of South Boats IOW Limited.

For more information

Tel +44 (0)1983 280030

sales@southboatsiow.com

www.southboatsiow.com

South Boats IOW Ltd.

Medina Yard, Pelham Road

Cowes, Isle of Wight, UK, PO31 7PG

